



Putting Our Energy Here. Naturally.

Heritage Gas

ESANS *"Think Before You Dig"* Workshop

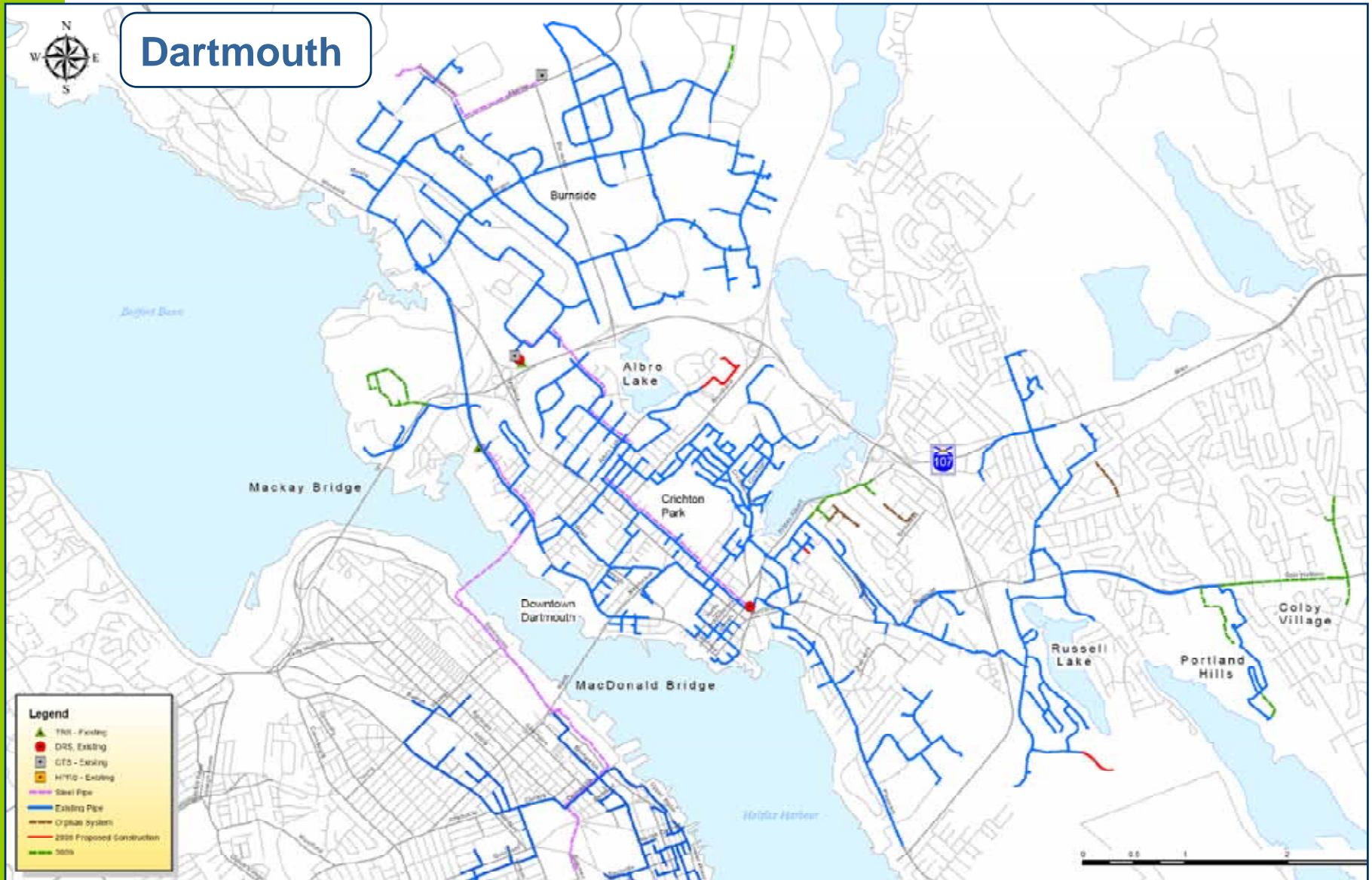
Chris MacAulay
Manager, Operations
February 5, 2009

Who is Heritage Gas?

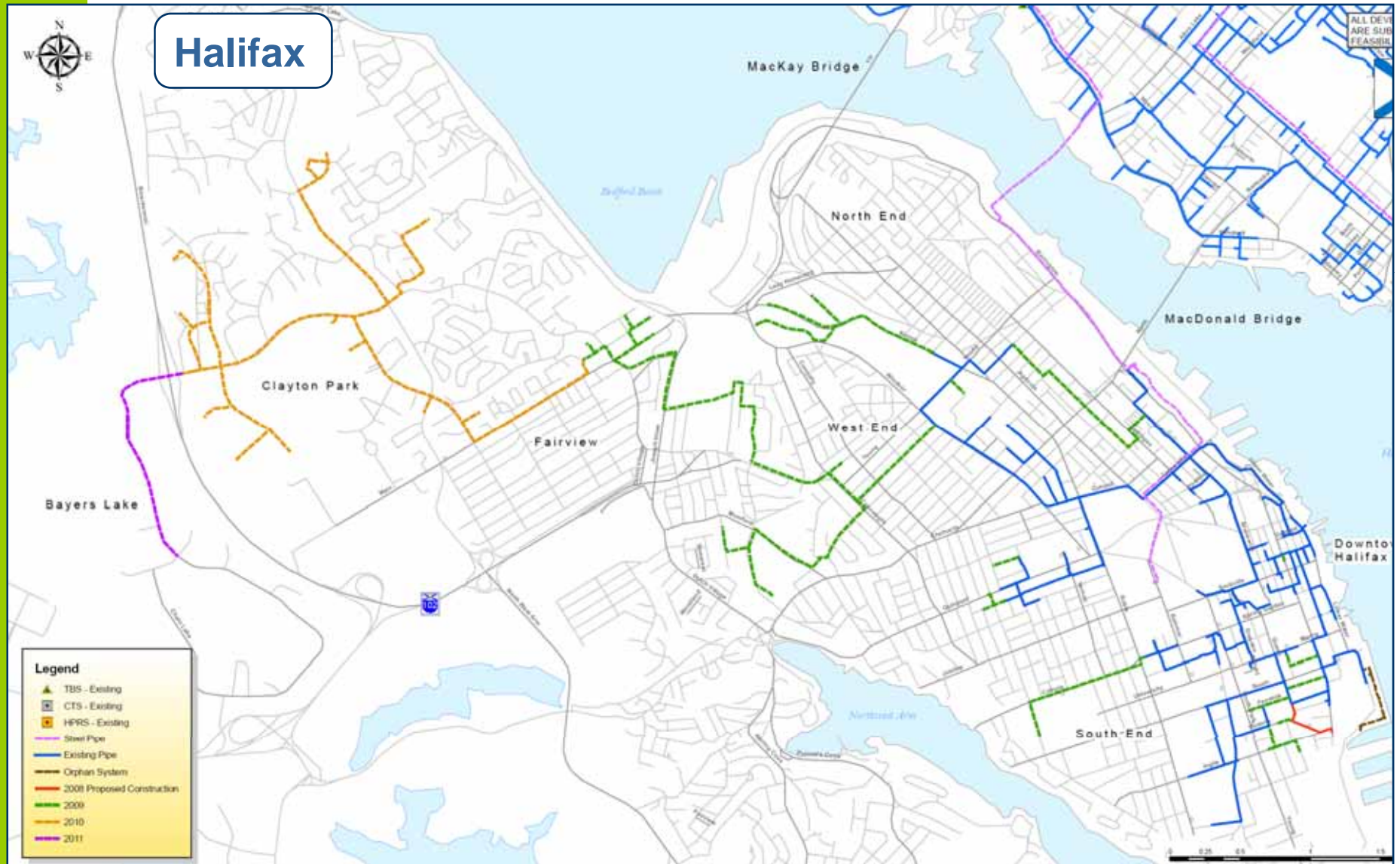


- Acquired Natural Gas Distribution franchise in 2003
- Currently serving Dartmouth, Halifax, Amherst and Enfield (Airport)
- 211 km of Gas main system wide
- 2,000 Natural Gas Customers
 - Industrial
 - Commercial
 - Residential
- Future Expansion
 - Halifax / Dartmouth
 - Bedford West
 - Truro

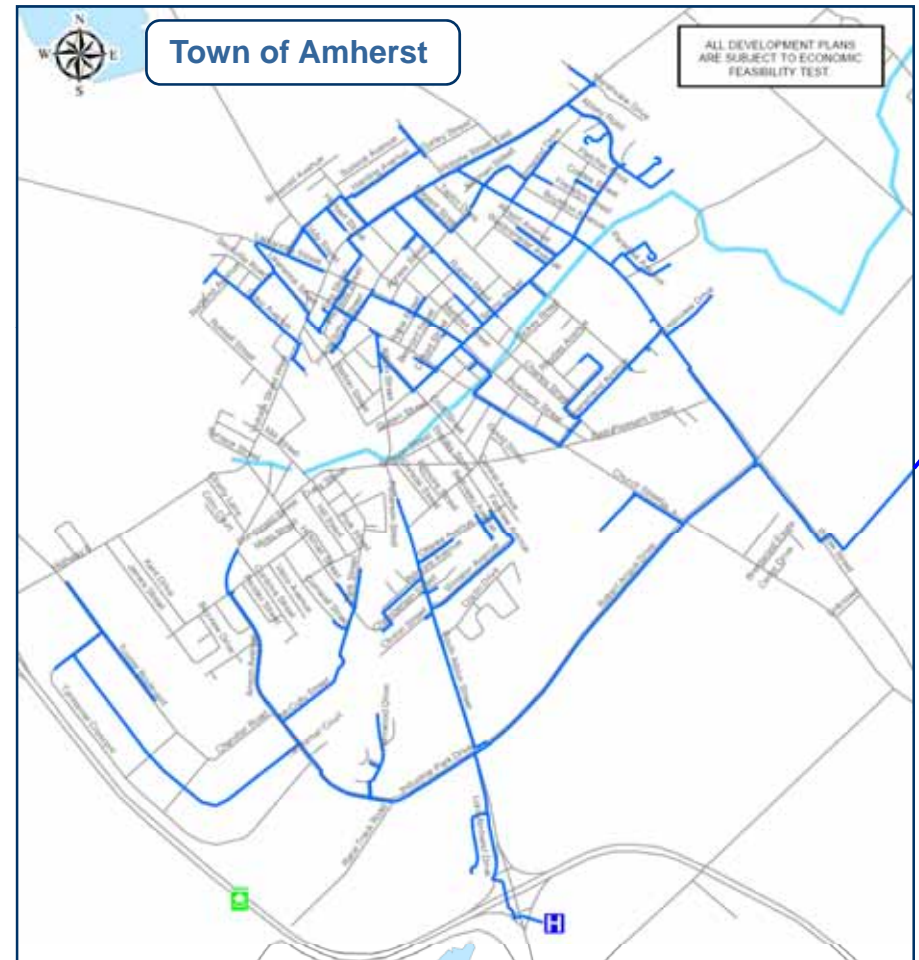
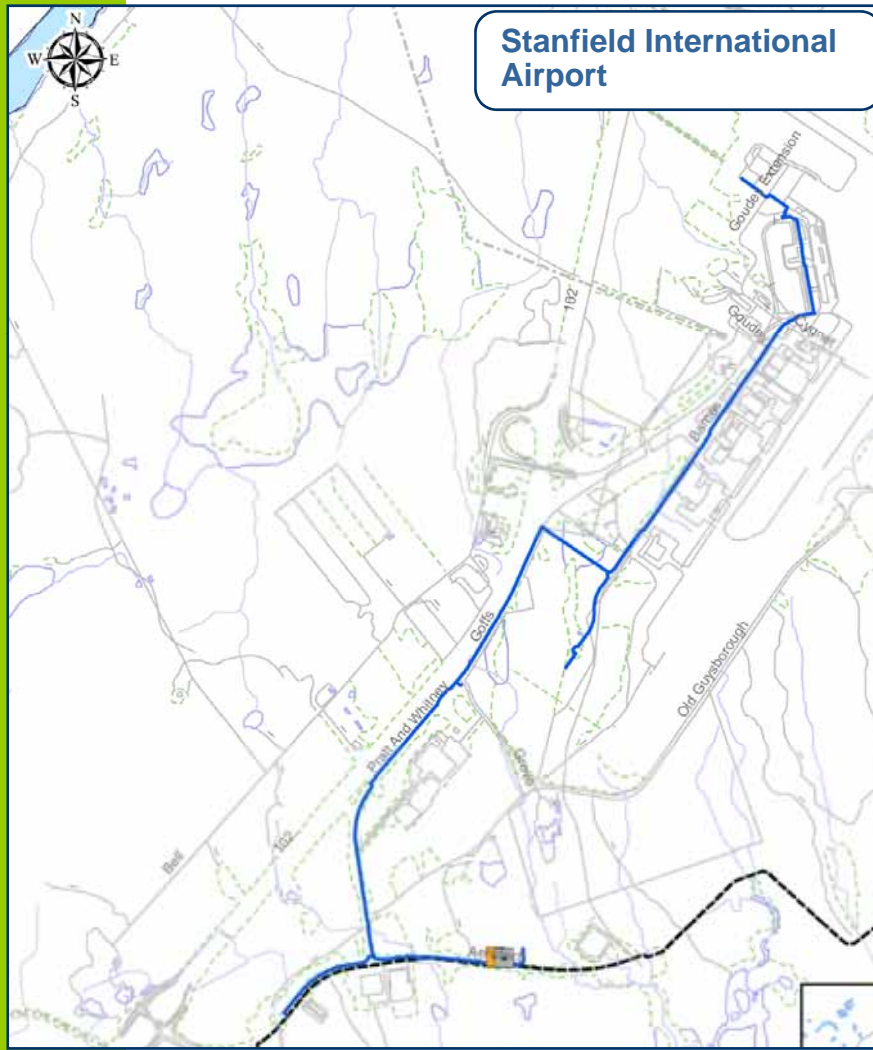
Local Distribution and Expansion Plans



Local Distribution and Expansion Plans



Local Distribution and Expansion Plans



Heritage Gas Pipelines

Steel

- ✦ Size Range: 4" to 12"
- ✦ Pressure: Up to 500 psi (3500 kPa)

Polyethylene (Plastic)

- ✦ Size Range: ½" to 6"
- ✦ Pressure: Up to 100 psi (690 kPa)



Our Message to Contractor Community:

Call Before You Dig

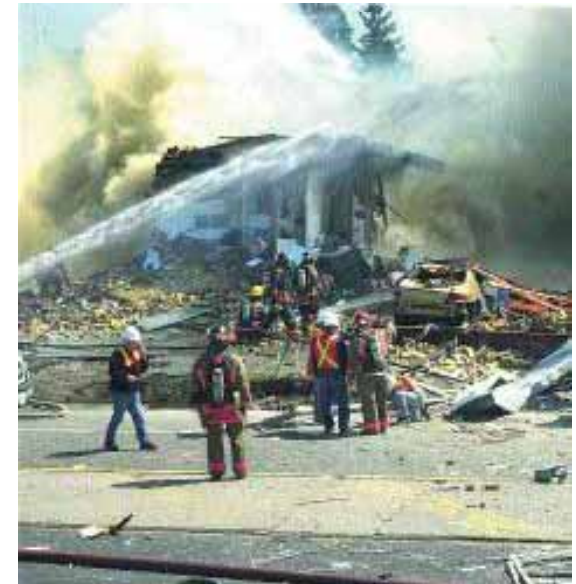


1-866-313-3030

Heritage Gas

Legal Requirement of:

- NS Pipeline Regulations
 - UARB
- NS OH&S Act
 - Department of Labour & Workforce Development



Exposing Natural Gas Lines



Heritage Gas Technician on site to provide assistance

Protection of Pipeline

- No mechanical excavation within 1 metre until Pipeline is exposed (“Daylighted”)
- Then mechanical digging permitted no closer than 0.3 metres
- Pipeline support or other protection if required

Proper Backfilling

- Properly supported underneath by clean, compacted fill
- Sand padding for a minimum of 30 cm around the pipe before backfilling with other materials.
- Ensure the tracer wire is installed above and in line with the natural gas line.



Questions

